



**KIWICAMP**



**KIWICASH**

## KiwiCamp Accessible facility V2





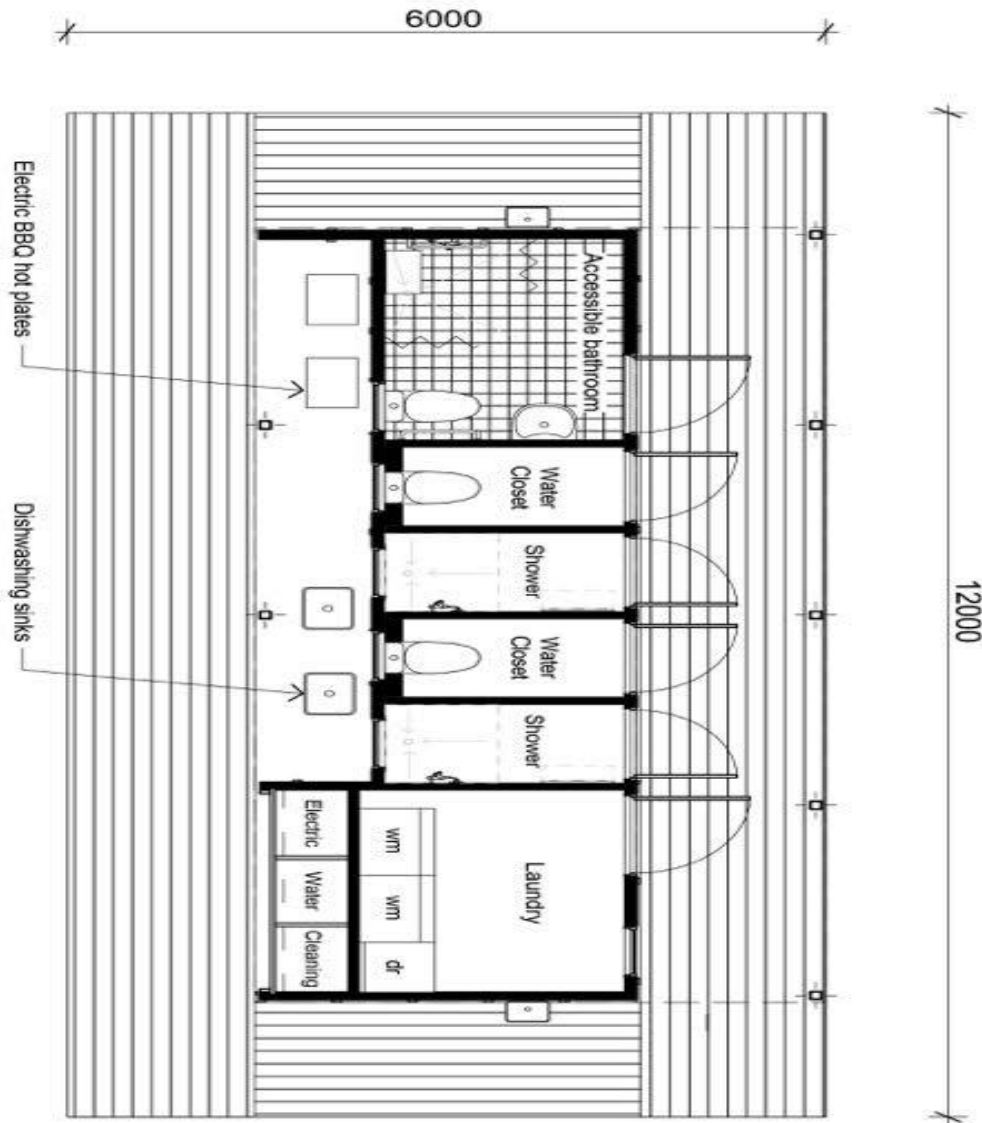
**KIWICAMP**



**KIWICASH**

The KiwiCamp accessible V2 facility is designed as a tune key solution. The buildings, technology and software are all New Zealand made and delivered onsite ready to operate. The facility is portable and easily relocate if necessary.

While services are provided through the KiwiCamp building, management is controlled using the KiwiCash web services.



**The buildings consist of.**

Laundry and powder room

2 x Maytag commercial washing machine HE model

2 X Maytag commercial electric dryer  
HE model

3 x power doc stations with housing and NFC locks.

All units fitted with KiwiCash payment technology.

2 x showers rooms

Shower rooms Include.

Shower hardware.

Shower room seat.

Clothes hooks.

KiwiCash technology and operating systems.

2 x toilets rooms.

Toilet room includes

Stainless steel toilets

External mounted cistern.

Double toilet roll dispenser.

Toilet brush.

1 x paraplegic toilet and shower

Unit includes.

Stainless steel paraplegic toilet

External mounted cistern

Double toilet roll dispenser

Toilet brush

Paraplegic rails and shower seat.

KiwiCash technology in operating systems.

2 x exterior hand cleaning station.

Station include stainless steel sink

Press to use tap.

Stainless steel mirror.

2 x exterior dishwashing station.

Stations Includes

Stainless steel double sink

Mixer and spout.

KiwiCash technology and operating systems.



2 x exterior cooking stations.  
Stations include.  
Double electric cooktop  
KiwiCash technology and operating systems.

### **Service lock up.**

Housed at the back of the building under a secure colour steel door this area contains area for storage of cleaning products, water heating accessories and the security and connection hub.

### **Cleaning and maintenance area.**

This area is designed to house all cleaning products and sanitary items.

### **Security and connection hub**

This hub houses all electrical breakers, security camera control, internet services and battery backup.

Security cameras can be viewed remotely at any time via the Internet by an authorised user. The cameras and wifi system and battery come pre-mounted on the building and consist of.

- 4 x uniview IPC324ER3dome 4mp vandell proof cameras.
- 1 x high definition camera.
- 1 x DVR recorder with 2 terabyte hard drive.
- 1 X uninterrupted power supply
- 1 X wifi antenna.

Housed in a lockable ventilated metal housing.

### **Water heating.**

The water option provided is for a gas califont. If this in not suitable an electric cylinder can be installed instead. The solar option would result in an increase in price.  
See spec attached.



### **Signage and instructions.**

Agreed site specific site rules signage as well as all facility and operation signage will be pre-installed on the KiwiCamp facility, with extra site and Road signage to be installed by operator.

Signage consists of.

- 2 x unisex toilet
  - 1 X unisex paraplegic toilet
  - 1 x dishwashing
  - 1 x cooking
  - 2 x KiwiCamp site rules
  - 2 x KiwiCash user instructions.
  - 1 x Camp entrance sign
  - 2 x small KiwiCamp road signs.
- (See examples attached).

### **Foundation work.**

KiwiCamps facilities has different foundation options depending on soil type. This system enables fast and accurate foundations with minimal impact on the surrounding area. All these options allow the building to be portable with services enabled to be disconnected easily.

### **Building Construction.**

The construction is made up of lightweight Steel Framing covered in hard wearing wood finishes. The interior is a mix of plywood, and durable shower linings. Floors are finished with a high-grade epoxy flooring system. Exterior cladding being colour steel and wooden board and batten. The surrounding deck NZ pine.

### **Future proofing**

Future proofing is a very important concept to the KiwiCamp concept and we have ensured that this building can be altered in future if necessary. Extra services can be added on the exterior to the building with electrical conduit preinstalled. Extra power glands and breaker box space available for future external services.



### **Landscaping and site prep.**

We believe that a KiwiCamp can enhance the tourist experience while benefiting the community and adding to the natural flora and fauna of an area. KiwiCamp can help with plans and we recommend that only local native species are used in planting and fencing to be made to look natural and inviting.

### **Extra considerations**

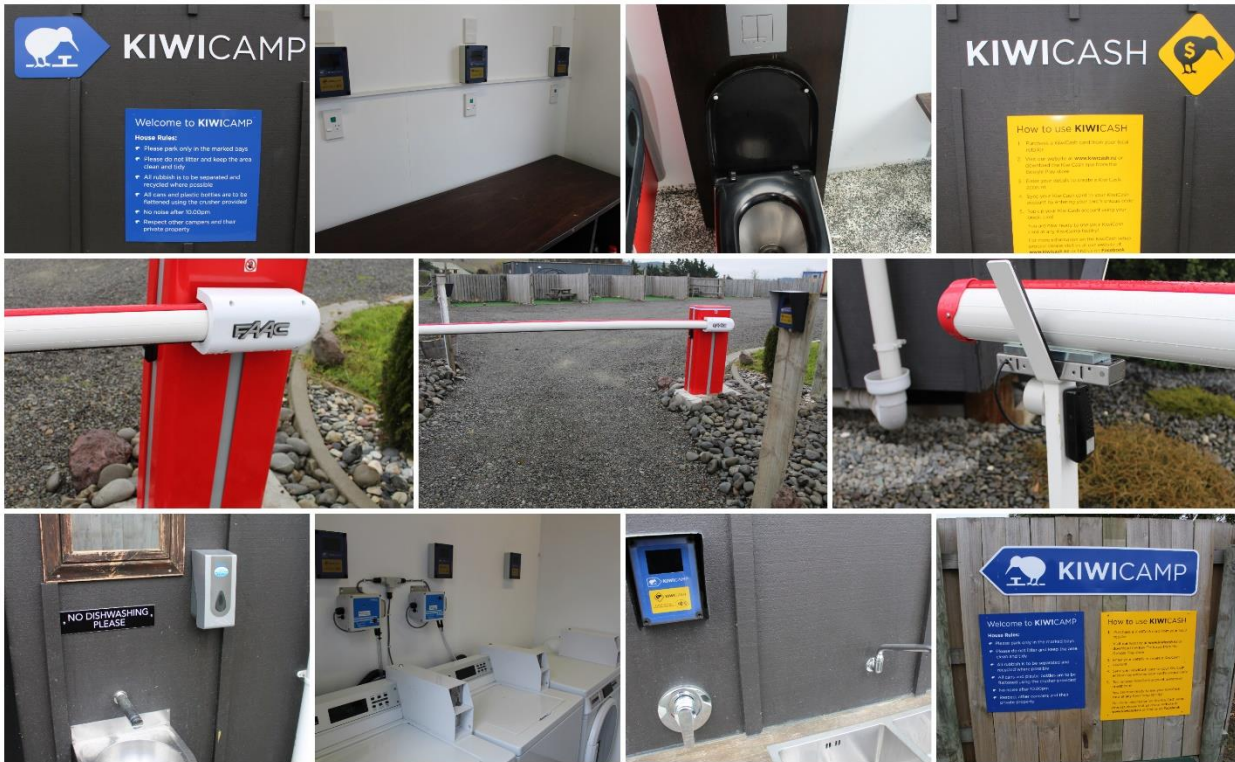
While the KiwiCamp building provides for all the basic needs of a traveller we do recommend a few additions to the site to provide a full service. Services such as Caravan power docks and E-Bike charging stations can be added to any site and will improve the user experience and increase occupancy.

Controlling the site access via a Boom gate will enable an operator to control occupancy monitor the site accurately and allow online bookings.

### **Site planning.**

At KiwiCamp we are experts in Camp sites design and layout, we offer a full design service. From our experience with sites across the country we have the experience to make any site functional and easy to manage.

Examples of workmanship.



Operational video.

<https://www.youtube.com/watch?v=YrUnUI23YZA&authuser=0>